

The Thlinget.

DEVOTED TO THE INTERESTS OF THE NATIVE PEOPLE OF ALASKA

VOL. 2

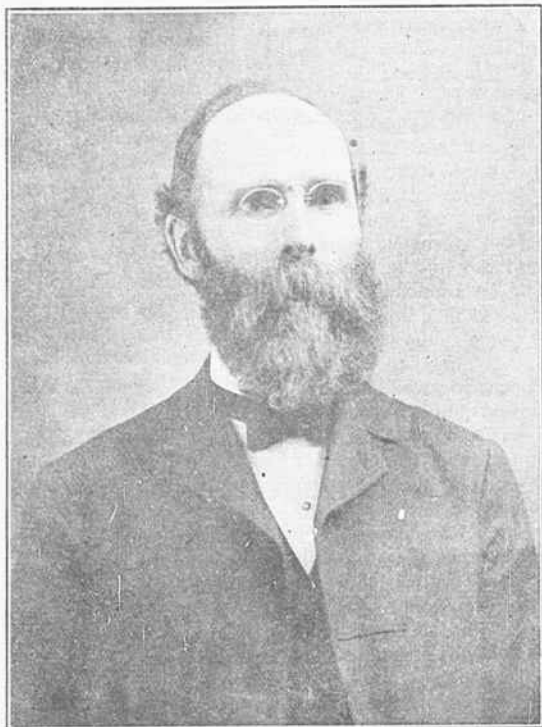
SITKA, ALASKA.

APRIL, 1910

No. 9

W. A. KELLY

On Tuesday evening, April 5th the teachers of the S.T.S. gave a reception at Pittsburg Cottage to the members of the Thlinget Presbyterian Church in honor of Mr. William A. Kelly who for many years was Superintendent of our school. Over ninety people were present and thoroughly enjoyed greeting Mr. Kelly who has been "a true friend to us ever since he came here", as one of the native people expressed it. There were a number of speeches by the people and Mr. Kelly entertained every one present with reminiscences of early events in the history of the school when there were multitudinous hindrances to the mission work. During the evening several numbers of vocal and instrumental music were rendered and added to pleasure of the occasion. Mr. Kelly left on the Georgia of the 8th for Seattle and other coast cities. He expects to locate permanently somewhere in the Northwest. All who know of his connection with the mission and educational work in Alaska are sorry to see him leave our Territory. He has always been a stalwart friend of righteousness and his character as a Christian citizen has been in keeping with his Scotch-Irish ancestry and his Presbyterian training. Mr. Kelly was one of the first commissioned teachers sent out by the Bureau of Education to Alaska. He reached Sitka in June, 1885, and was placed temporarily in



charge of the Sitka Training School, which was then a contract school. Later he was commissioned as its general superintendent for a period of six years. In 1892 President Harrison appointed him United States Commissioner and Probate Judge for southeastern Alaska to reside at Wrangell. In 1896 the Board of Home Missions recalled Mr. Kelly to the superintendency of our school and he served in this capacity for eight years more. He was superintendent of the

U.S. public schools of S.E. Alaska for a number of years during which time he visited every school and mission station in his district. Since resigning from this position he has served as National Bank Examiner for Alaska. During recent years he was connected with the Chichagoff Gold Mining Co. and was its secretary and treasurer but last fall severed his connection with the company.

Mr. Kelly has been an elder in the native Church here for many