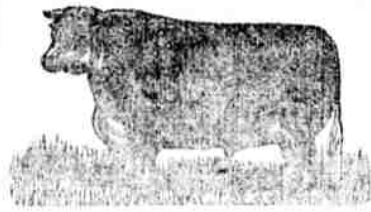


Oh Boy

One visit a day to the little brown hen coop and I bring in all the fresh eggs a man can carry. We save the people millions of dollars by selling nothing but carefully candled eggs.



Rain Makes the Grass Grow

Grass makes beef grow. We received a carload of fat juicy beefsteaks this week. If you haven't had one, get busy.



Fine Young Pig Pork

Is always in season. No excess baggage in the way of fats on our summer pork. Try our own make links for your next breakfast.



Brookfield Butter

The brand that Swift & Co. banked their reputation on and the same butter that we tied to. If it is Brookfield it is best.

ALL GOODS PRICED CASH

Kingman Meat Market

Phone Blue 4

OFFICE OF THE BOARD OF SUPERVISORS OF MOHAVE COUNTY, STATE OF ARIZONA

KINGMAN, JULY 1, 1918.

The Board of Supervisors of Mohave County, State of Arizona, met this day at 9 o'clock A. M. Present full Board and Clerk.  
The following claims against Mohave County were checked by the Board and Clerk instructed to draw warrants in payment of same:

Fund	Demand No.	To Whom	Purpose	Drawn	Amt.
Salary	619	County official payroll of the county officials and employees for the period ending June 30, 1918.			\$2,270.78
Road	620	Austin Western Road Mach. Co.	Supplies		2,000.00
Gen.	621	Mohave County Miner	Supplies		9.00
Gen.	622	Desert Power & Water Co.			48.77
Gen.	623	Poster Thompson			437.25
Gen.	624	Arizona-California-Nevada Telephone			55.10
Gen.	625	I. R. Bartholomew			1.00
Gen.	626	Wilmaria Baladez			25.00
Gen.	627	Bill Yee			10.40
Gen.	628	Central Commercial Co.			93.84
Gen.	629	J. C. Bothwell			15.00
Gen.	630	I. R. Bartholomew			1.00
Gen.	631	Manuel Ciuentes			15.00
Gen.	632	J. N. Cohenor			149.60
Gen.	633	C. A. Patterson			1.00
Gen.	634	Crane & Company			7.20
Gen.	635	L. C. Comfort			15.00
Gen.	636	A. A. Dutton			16.85
Gen.	637	Indian Beecher			2.50
Gen.	638	Chas. A. Imus			15.00
Gen.	639	J. H. Knight			15.00
Gen.	640	Kingman Pub. Co.			7.38
Gen.	641	Kingman Transfer Co.			43.60
Gen.	642	Kingman Vulcanizing Works			112.55
Gen.	643	Kingman Water Co.			17.50
Gen.	644	Geo. W. Kent			45.83
Gen.	645	Otto F. Kuencer			45.00
Gen.	646	Geo. Kirk			13.48
Gen.	647	Kingman Transfer Co.			1.25
Gen.	648	C. W. Lynch			9.15
Gen.	649	Fred Leonard			10.00
Gen.	650	Frank Lacy			15.00
Gen.	651	J. W. Lauritzen			99.65
Gen.	652	Geo. Leland			15.00
Gen.	653	Los Angeles Rubber Stamp Co.			17.08
Gen.	654	Axel Ericson			3.00
Gen.	655	Ford Garage			2.19
Gen.	656	Fess System Co.			5.75
Gen.	657	Ben Franks			15.00
Gen.	658	W. G. Gruniger & Son			18.05
Gen.	659	Nannie Murphy			116.00
Gen.	660	Mohave County Assessor			97.00
Gen.	661	Mohave County Assessor			15.75
Gen.	662	J. W. Gerritt			600.00
Gen.	663	I. N. Hart			6.80
Gen.	664	A. F. Harris			68.00
Gen.	665	I. N. Hart			1,647.10
Gen.	666	I. N. Hart			.40
Gen.	667	I. N. Hart			9.00
Gen.	668	Dr. Reynold J. Mapes			3.00
Gen.	669	Mohave Garage			58.15
Gen.	670	McNeil Printing Co.			78.73
Gen.	671	C. C. McLuckie, assigned to I. N. Hart			52.00
Gen.	672	Mohave Lumber Co.			43.50
Gen.	673	Frank L. Porter			15.00
Gen.	674	Ben Penberth			15.00
Gen.	675	Tom Patterson			4.50
Gen.	676	W. H. Rivers			2.50
Gen.	677	Charley Sing			25.00
Gen.	678	J. D. Sparge			25.00
Gen.	679	St. Paul Fire Insurance Co.			67.50
Gen.	680	Zadock Sheffield			30.50
Gen.	681	J. W. Sylvester			15.00
Gen.	682	Tarr, McComb & Ware Commercial Co.			1.05
Gen.	683	Tom Reed Gold Mines Co.			9.00
Gen.	684	Paul C. Thorne			8.25
Gen.	685	The Gazette Printing & Publishing Co.			7.50
Gen.	686	The Neuner Co.			33.75
Gen.	687	H. L. Underwood			7.20
Gen.	688	Union Oil Co.			26.62
Gen.	689	C. R. Van Marter			60.00
Gen.	690	Mrs. A. Vermehr			10.00
Gen.	691	F. N. Van Marter			30.67
Gen.	692	M. G. Wagner			14.85
Gen.	693	Western Union Telegraph Co.			15.82
Gen.	694	Wells Fargo Express			.75
Gen.	695	T. R. White			15.00
Gen.	696	H. H. Watkins			40.60
Gen.	697	T. R. White			25.00
Gen.	698	H. Ray Woods			10.55
Gen.	699	Yawman & Erbe Mfg. Co.			71.65

Gen.	700	Grimes-Stassforth Stationery Co.	58.82
Gen.	701	Arizona Stores Co.	5.35
Gen.	702	Kingman Vulcanizing Works	169.65
Gen.	703	A. L. Kroeger	25.00
Gen.	704	Mohave Lumber Co.	16.71
Gen.	705	The A. Leitz Co.	1.45
Gen.	707	Standard Oil Co.	8.10
Gen.	708	Mohave Garage	3.30
Gen.	709	I. N. Hart	2,890.19
Gen.	710	R. H. Hayward	75.00
Gen.	711	I. N. Hart	331.50
Gen.	712	R. H. Hayward	75.00

The following appointments by the County Recorder approved by the Board: Mary E. Carrow, Mary Kauser, Otto F. Kuencer as Deputy Recorder in the office of the County Recorder.

The voting precinct of Mt. Trumbull established by the Board with voting places at the school house; also William Drink appointed as inspector of election board.

Upon motion Board stands at recess until 9 o'clock A. M., July 2, 1918.

Attest: F. N. VAN MARTER, Clerk. W. B. STEPHENS, Chairman Board of Supervisors of Mohave County, Arizona.

OFFICE OF THE BOARD OF SUPERVISORS OF MOHAVE COUNTY, STATE OF ARIZONA

KINGMAN, JULY 2, 1918.

Pursuant to recess of July 1, 1918, the Board of Supervisors of Mohave County, State of Arizona, met this day at 9 o'clock A. M. Present: Full Board and Clerk.

The hour of 10 o'clock A. M. having arrived the Board proceeded to examine and consider bids for publishing the proceedings of the Board of Supervisors, notices of rewards, etc. The following bids were received, to-wit: Mohave County Miner Printing Co. for publishing the Proceeding of the Board of Supervisors, per column inch Thirty-five (35c) Cents; for publishing and printing notices of rewards, bids, election proclamations, sale of bonds and all other notices required by the County and that are by law a County charge, Seventy-five (75c) Cents per column inch. Our Mineral Wealth (Kingman Publishing Co., Publishers), publishing the Proceedings of the Board of Supervisors, Thirty-one (31c) Cents per column inch each insertion. Publishing and printing notices of rewards, notices of bids, election proclamations, notices of sale of bonds and all other public notices required by the County that are by law a County charge, Sixty-eight (68c) Cents per column inch each insertion. After due consideration and upon motion duly made, seconded and passed, the publishing contract was awarded to the Kingman Publishing Co. by unanimous consent of the Board; said contract terminates July 1, 1919.

The bond of the Kingman Publishing Co. covering the Mohave County publishing contract approved by the Chairman of the Board of Supervisors.

The Board considered the salaries of precinct officers for the ensuing two years and fixed same as follows:

Kingman Precinct—Justice of the Peace salary, \$100 per month. Constable salary, \$25 per month.
Oatman Precinct—Justice of the Peace salary, \$25 per month. Constable salary, \$25 per month.
Goldroad Precinct—Justice of the Peace salary, \$25 per month. Constable salary, \$25 per month.
Owens Precinct—Justice of the Peace salary, \$20 per month. Constable salary, \$15 per month.
Chloride Precinct—Justice of the Peace salary, \$25 per month. Constable salary, \$25 per month.
Signal Precinct—Justice of the Peace salary, \$10 per month. Constable salary, \$10 per month.
Littlefield Precinct—Justice of the Peace salary, \$10 per month. Constable salary, \$10 per month.
Hackberry Precinct—Justice of the Peace salary, \$20 per month. Constable salary, \$20 per month.
Yucca Precinct—Justice of the Peace salary, \$10, per month. Constable salary, \$10 per month.
Short Creek Precinct—Justice of the Peace salary, \$10 per month. Constable salary, \$10 per month.

STATE OF ARIZONA, COUNTY OF MOHAVE, SS

The undersigned, the Board of Supervisors and County Attorney, hereby certify, under oath, that on the 2nd day of July, 1918, pursuant to the requirements of the Revised Statutes of Arizona, 1913 (Title 10, Chapter 4, Paragraph 2449), they made a careful examination of the accounts of the Treasurer of said County, ascertained that there ought to be in the County Treasury of said Mohave County money to the amount of Eighty-four Thousand Nine Hundred Twelve and 22-100 (\$82,912.22) Dollars and that after having so ascertained said money they, on the same day, counted the money in the said Treasury and that there was therein, when so counted, the following, namely:

In gold coin of the United States	\$ 10.00
Currency	330.00
Certificates of Deposit	67,945.52
Checks	16,597.32
Silver	29.40
Total	\$84,912.24

L. H. FOSTER, C. W. LYNCH, Supervisors of Mohave County. S. D. STEWART, County Attorney.

Subscribed and sworn to before me the 2nd day of July, 1918. F. N. VAN MARTER, Clerk.

OFFICE OF THE BOARD OF SUPERVISORS OF MOHAVE COUNTY, STATE OF ARIZONA

KINGMAN, JULY 2, 1918.

Reports of the various County officials examined and approved by the Board, and Clerk instructed to file same. Correspondence read and approved as read.

ASSETS OVER		CAPITAL and SURPLUS
\$3,000,000		\$325,000
ARIZONA CENTRAL BANK Established 1887		

Liberty's Closest Ally-- Thrift!

There is no Royal Road to winning the war any more than there is to wealth.

IT CALLS FOR PRINCIPALLY SACRIFICE. PRACTICE SELF-DENIAL

DO YOUR PART BY SAVING  
SAVE SOMETHING EVERY DAY

Arizona Central Bank  
Capital, Surplus and Undivided Profits, \$325,000  
KINGMAN, ARIZONA

Minutes of previous meeting read and approved. There being no further business before the Board they stand adjourned until 9 o'clock A. M., July 15, 1918. Attest: F. N. VAN MARTER, Clerk. W. B. STEPHENS, Chairman Board of Supervisors of Mohave County, Arizona.

OFFICE OF THE BOARD OF SUPERVISORS OF MOHAVE COUNTY, STATE OF ARIZONA

KINGMAN, JULY 15, 1918.

The Board of Supervisors of Mohave County, State of Arizona, met this day at the hour of 9 o'clock A. M. Present: Full Board and Clerk.

The following claims against Mohave County were checked by the Board, and Clerk instructed to draw warrants in payment of same:

Fund	Demand No.	To Whom	Purpose	Amt.
Salary	712 1/2	Payroll of the officials and employees of Mohave County for the period ending July 15, 1918.		\$2,274.99
Gen.	713	R. H. Hayward	Salary Acting Co. Engineer	75.00
Gen.	714	Smith, Philip A.	Deputy Court Clerk	62.50
Gen.	715	Van Marter, F. N.	Indig. Tpn. Postage, etc.	57.95
Gen.	716	McLuckie, C. C.	Salary Sewer Inspector	56.00
Road	717	Brawn & Robinson	Drayage and supplies	25.66

(Continued On Page Four)

Save-- Fuel Time Food Money

ELECTRICITY LESSENS EVERY TASK OF HOUSEKEEPING, HOME-MAKING. IT SAVES THE HOUSEWIFE MILES OF STEPS, HOURS OF EFFORT, DOLLARS OF EXPENSE.

Have Your Home Thoroughly Equipped with ELECTRICITY

DESERT POWER & WATER CO. KINGMAN CHLORIDE

DIAMONDS

\$115.00 Per Carat  
WUERKER'S

JEWELRY MANUFACTURING and REPAIRING  
626 Broadway—229 So. Spring, Los Angeles