



VITA
UK'd by
 Western Michigan

We folks in God's country yield to no one when it comes to knowing what's good to eat and drink. And we all drink Vita, at the fountain downtown, and on our tables regularly. Made from the finest of Michigan grains, it has food value, and besides it's mighty good.



PETERSEN BEVERAGE CO. GRAND RAPIDS, MICH.

Of Interest To Apple Growers.
 The following letter which was received by Brinton F. Hall from Prof. L. R. Taft of M. A. C. at Lansing will be of real interest to apple growers in this vicinity:

April 15, 1919.
 Mr. Brinton F. Hall, Belding, Mich.
 Dear Mr. Hall: To secure the best results in controlling apple aphids the spray should be applied within 12 to 14 days from the time the first aphids hatch. If you have fixed the date accurately, you should plan to begin the spraying so that it may certainly be completed within 14 days.

One week ago I was in Benton Harbor and they were just beginning to apply the spray for aphids, as the first had hatched on March 28. They hatched here about a week ago and I think it would be advisable for you to plan to finish your spraying for the aphids before the close of the following week.

For 100 gallons of spray, use 7 lbs. of dry lime-sulphur and 3-4 pint of "Black Leaf 40".

I have carefully noted your spray program and think it excellent for the most part. In fact, without knowing more of your conditions I would not suggest any positive changes. I think it is very important that a pre-pink spray be applied. This means that the trees should be sprayed as soon as the fruit bud can be seen in the clusters; or, at least very soon after they begin to separate. This would be before any color appears at the tip of the buds. While it will be a little early to exactly satisfy these conditions, the spray which I have suggested for the aphids would answer as a pre-pink spray.

The second spray should be about as late as possible before the petals open. Ordinarily I would prefer to use about 4 1-2 lbs. of the dry lime-sulphur to 50 gallons, but having made the aphid spray, 3 1-2 pounds should answer. While some rely upon one gallon of lime-sulphur solution to 50 gallons, I prefer to apply one gallon to 40 gallons of water. This would require about 3 3-4 lbs. of the dry lime-sulphur to 40 gallons in order to have the same amount of sulphur in solution and would be equivalent to practically 4 1-2 lbs. in 50 gallons.

As stated above, I would not make any change in your formula for the first spray so far as the amount of lime-sulphur is concerned. If you have been troubled with leaf-curlers, curculio, tent-caterpillars or canker worms, I would add 1 1-2 lbs. of powdered arsenate of lead to 50 gallons.

Provided you have four weeks between the time you make the aphid spray, I would follow it up with the schedule you have arranged, putting on our No. 1 spray ten days to two weeks after the aphid spray and then using our dust spray ten days to two weeks later, just before the blossoms open.

While I have considerable faith in the use of dust for the fourth and fifth sprays. In a season when the weather is fairly normal, if you have cool weather with frequent rains, I would rather work in one more liquid spray two weeks after your third spray; or ten days later if rains threaten.

We will have better success with spraying operations if we are able to make all applications just previous to the rains. After a rain, provided we have sprayed immediately before the rain, there is no great need of another application for about ten days. But, if a rain is coming, we should make every effort to spray before the rain comes. Of course, you know that the spores only develop in the presence of moisture and cannot develop where the spray has been applied. Hence the reason for spraying just before a rain. There are really two reasons for repeating the spray ten days after a rain. One is, that the effect of the spray will be largely gone by that time and that we should also prepare to spray in order to cover the new growth which has come out. The other reason is, that if the previous spray was not perfect enough to prevent all of the spores from germinating those which were able to develop will form new spores in about 12 days; and we should get on another application before these spores have scattered.

I am getting many reports of there being a great number of aphids hatching. Of course, those which hatch first are grain aphids and these do not do very much harm; but conditions which would favor their development would also be favorable for green apple aphids, and for the rosy aphids, which are the ones that do most harm. The reason why it is desirable to wait about 12 days after the first aphids hatch is that the green apple and rosy aphids do not hatch until about 10 days after the grain aphids; and, if we wait about 12 days we will then be just in time to get the green and rosy aphids, and will have also caught the grain aphids.

It is especially desirable to make the aphid application in the early cluster bud stage, as if we wait until the bud clusters open and the leaves develop it will not be as easy to reach all of the aphids. You are doubtless aware that if the weather during May is cool it will prevent the development of the aphid parasites; while if it comes off warm, the parasites will increase and will take care of the aphids. When making the late pink spray if you find that the aphids are fearful, I would also add the Black Leaf 40 to the application; or use the dust compound which contains tobacco.

While I am not prepared to unqualifiedly endorse the dust for all applications, it is certainly advisable to have a machine and material available, as you can frequently use the dust when it is too wet to spray. It also helps in doing a rush job.

Respectfully,

L. R. Taft.

Get Higher Legal Rates.
 A bill passed the state legislature and has been signed by the governor giving the newspapers a substantial raise on their legal advertising. Instead of the 70c a folio first insertion and 35c second insertion they will now get \$1.20 per folio first and 60c second insertion.

The old rates have remained the same for 60 years. This will help the newspapers quite materially, taking the year as a whole.

Plant Enough Seed Corn.

The advice about "Plant one kernel for the blackbird, one for the crow, one for the cutworm, and two to grow" is just as appropriate now as ever. It is never advisable to plant weak seed and it is the height of folly to attempt to atone for the weakness of the seed by planting a superabundance, as, irrespective of other conditions, weak seed will produce only low-yielding plants. For good harvests it is essential to plant vigorous seed of acclimated and well known varieties. Experts of the United States department of agriculture recommend planting the best quality seed a little thicker than the stand desired in order to provide against unfavorable conditions. If these unfavorable conditions do not arise, it is easier to

remove a few stalks from the growing crop than it is to replant, which always produces late maturing, unprofitable plants. "Plant sufficient seed to secure a good stand," say the federal specialists, "as it is more practicable and profitable to thin a thick stand of corn than to replant a patchy and spotted field." With good seed and good soil conditions, about four kernels should be planted for every three stalks desired.

Will Exchange Pulpits.

Rev. R. J. Slee of Ionia will exchange pulpits with Rev. P. Ray Norton of the local M. E. church next Sunday night. Rev. Slee will talk at the local church while Rev. Norton is taking his place at Ionia.

Methodist Church Notes.

On the evening of May 18 the Methodist Sunday school is planning a special program in honor of the returning soldiers, sailors and nurses. All soldiers, sailors and nurses will have reserved seats and are cordially invited to attend.

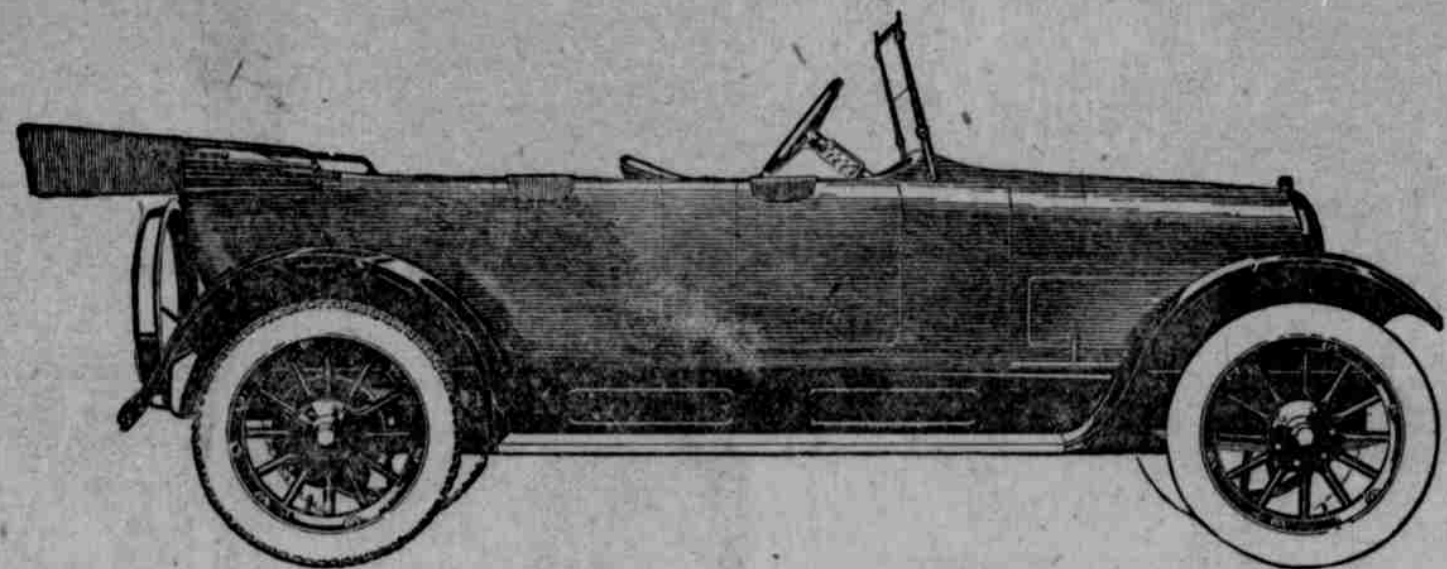
Next Sunday morning Mrs. F. U. Doubleday of Kalamazoo will speak at the morning service on the work of the Woman's Foreign Missionary society at which time the annual thank offering for that society will be taken.

There will be an organization meeting of the Woman's Foreign Missionary society this week Saturday afternoon at 2:30 at the home of Mrs. E. E. Hudson.

Practice for the coming missionary pageant, "The Torch Bearers" continues on Thursday night of this week and also on Friday night. The pageant is to be given Sunday night, May 11. About 75 young women will take part. Part of the costumes are now on hand and more will arrive this week. A real live returned missionary is to be the prolocutor, which insures an air of realism. Don't forget the day, May 11.

The Sunday school children's day program is now assured for Sunday, June 8. Mrs. Will Covert, Mrs. Arthur McCoy and Miss Helen Pressley are the committee in charge.

Any man who is a bear on the future of this country will go broke, says J. P. Morgan.



How Model 90 Broke the High Gear Non-Stop Record

Could the strongest power plant ever built stand the gruelling, searching punishment planned for the Overland 90 stock model when it started on its 7 day sealed in high gear, non-stop run recently at Oklahoma City?

The first days performance was watched by the public with eager interest-601 miles and not a sign of let-down in the car's perfect record. Then two days of rain-whirling, drenching downpours, mud-clogged roads, which tried the endurance of four relays of drivers. Yet never a complaint from the sturdy Overland.

Four days more of pounding over country lanes and thru blocked city streets--always in sealed high gear--each day showing an average of 624 miles and an average of 20.66 miles to the gallon of gasoline.

And then the amazing score at the finish. Not once had the motor missed an explosion. Not even a spark plug was changed. 4370 miles was the non-stop high gear record by the Overland 90!

Among the 600,000 Overland owners, model 90 has long been known for its record of long life and economical service.

Let us show you an exact duplicate of this remarkable Model 90 car.

We also have some good bargains in used cars.

Expert repairing and overhauling of all makes of cars.

It is a significant fact that all the finest cars are equipped with Kelly-Springfield tires. For sale by us.

Only exclusive and fire-proof auto storage and show room in the city. Fales building.

Cars washed.

Auto livery, day or night

U. S. L. Storage Batteries for sale

AMES & UNGER

Belding,

Phone 318

Michigan