

EMPIRE Mechanical Milker

One man, using only one double unit, can milk 20 to 30 cows per hour, besides doing the stripping and carrying the milk. Single Units, each of which will milk 10 to 15 cows per hour, can be had if preferred. One man can operate two or three single units.

Heifers and old cows both like the EMPIRE Milker and take to it quickly. The frequent increase in milk flow proves that.

The illustration shows you the machine in actual operation, running for the first time, and the vacuum which supply the vacuum. Any suitable power will drive the pump.



Gently
Massages the
Teats After Each
Spurt of Milk

Does Not
Use
Compressed Air

Only One
Pipe Line Needed
It Can be Run
Wherever Convenient

Hand milking is a hard job in cold weather, in fly time, after a hard day's work or any other time, especially when you are short-handed. The EMPIRE Milker takes care of a job nobody likes. Pays you a handsome profit. Insures your cows always being milked regularly, quickly and uniformly. It's goodbye to hand milking and everybody glad of it.

The EMPIRE Milker is a fine machine. Absolutely reliable. Successful everywhere. Guaranteed by the Empire Cream Separator Company. See for yourself how simple, sure and reliable it is. Will be glad to show it to you at your first opportunity.

I now have one of these machines
on exhibition at my store

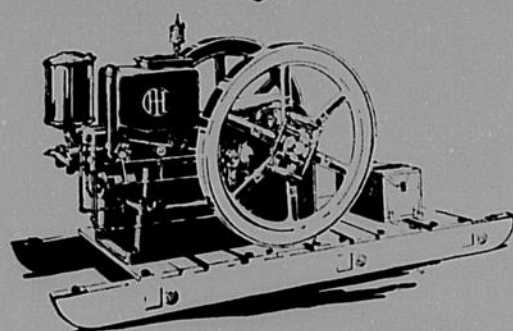
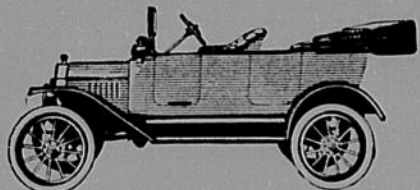
C. L. PRESTON, Sisseton

Ford

THE UNIVERSAL CAR

The Ford Motor Company is one of the largest consumers of steel in the world—200,000 tons this year. The great volume of production—over 500,000 cars—and the efficient Ford manufacturing organization, brings production and selling costs down to minimum. That's why Ford buyers get more car for less money. Runabout \$390; Touring Car \$440; Coupelet \$590; Town Car \$640; Sedan \$740. All prices f. o. b. Detroit. On sale at

The Carlberg Company



Are You Wasting The Price Of a Titan Engine?

TITAN engines run on kerosene. Average cost of gasoline so far this year, 16.9 cents per gallon. Average cost of kerosene 7.7 cents per gallon. Gasoline costs over 100 per cent more than kerosene. Gasoline is going up steadily. Kerosene is not. At present fuel prices Titan engines, using kerosene, save their owners about 1.1 cents per horse power per hour.

Are you running a gasoline engine? What horse power is it? Figure what you'd be saving if you had a Titan kerosene engine. Rather surprising, isn't it? How long would it take that saving to pay for a Titan engine of the same size?

International Harvester Company of America
(Incorporated)

Titan kerosene engines are sold by

THOS. THOMPSON
Sisseton, S. D.

Best Man In Town; Ever Hear of Him?

The best man we have in our town for the general good of the town is the one who you will always see on the front seat in the progressive band wagon. He is the first one to extend an open and warm hand to greet the stranger and welcome him to the best town in the state. He will result an insult to our town as quickly as he would a slur at a member of his own family. He very politely invites the chronic creaker to "move on." He is ever ready to give his just proportions to every public enterprise. He talks up our town at home and abroad and believes it the best place upon God's green earth in which to live and desires to be buried here when he dies. Let us all try to be like this man for you cannot register and if you take on new life and improve as never before in its history.

Lest any of our readers should not be familiar with the registration provisions of our primary law we will say that every voter who wishes to vote at the primary election of May 23rd must register with the township or city clerk before May 12th. We presume that many of the country voters registered when at the polls at the recent township elections and many Sisseton voters, a great majority, perhaps, will register when they go to vote at the regular city election on April 18. Voters who have not registered with the clerk of their voting precinct before May 8th will still have four days' time in which to register with the county auditor before the registration books are closed. After May 12 you cannot register and if not registered you will not be able to vote at the primary. If you wish a voice in the selection of the candidates of

Sale of Indian Lands.

Department of the Interior, United States Indian Service.

Sisseton Indian School, Sisseton, S. D.
Under the rules and regulations approved by the Secretary of the Interior, October 12, 1910, the following described land is offered for sale to the highest bidder under sealed bids on the dates mentioned. Bids will be received at the office of the superintendent at Sisseton Agency, Sisseton, S. D. until 2 o'clock p. m. of the day of sale, at which hour they will be opened.

Each bid must be accompanied by a duly Certified Check on some solvent bank, payable to the order of E. D. Mossman, superintendent, for ten per cent of the amount offered as a guaranty of the bidder's faithful performance of his proposition. If the bid shall be accepted, the successful bidder shall within thirty days after due notice fail to comply with the terms of his bid, such check shall be forfeited to the owner of said land, less the cost of advertising, etc. All such bids shall be inclosed in a sealed envelope, which must be marked by the bidder, "Bids for Indian land to be opened (here show the date of opening)" but the description of the land must not be noted on the envelope.

No bidder will be permitted to include more than one allotment in any bid. If a prospective purchaser desires to bid on more than one allotment he must submit a separate bid for each allotment he desires to purchase, and if he wishes less than an entire allotment, he must submit a bid for one or more legal subdivisions of such allotment.

Under no circumstances will the Superintendent or other officers in charge or any person connected with an agency office or the Indian Service be permitted to bid or to make or prepare any bid or assist any prospective bidder in preparing his bid.

The right to reject any or all bids is reserved.

Bidders, owners and other interested persons may be present when the bids are opened.

Purchaser shall pay all costs of conveying, and, in addition, the following sums, to wit: If the purchase price is \$1000.00 or less, \$1.50; if it be more than \$1000.00 and not more than \$2000.00, \$2.00; if the purchase price is more than \$2000.00, \$2.50; these to be used in payment of advertising the lands.

No bids for less than the appraised value will be considered.

Land sold in accordance with the provisions of these regulations will be conveyed direct to the purchaser by PATENT IN FEE SIMPLE from the United States.

All the following described land will be sold for CASH unless otherwise stated. All sales subject to a prior lease. Dates of expiration of leases will be shown opposite description of leased tracts advertised.

For further information apply in person or by letter to the undersigned.
E. D. MOSSMAN, Supt. and S. D. Agent.
Sisseton, S. D.

NONCOMPETENT INDIAN LANDS TO BE SOLD FOR CASH.

Listed for sale Mar. 20, 1916. Bids to be opened May 27, 1916.

Allotment No.	Name of Allottee	Description of Land	Acres	App'd Val.
1359	Mary Mazadutwin	SW 1/4 of NW 1/4, sec 5, Twp. 126 N., R. 50 W., 40	160	1600
390	Mare Winona Goodbird	SW 1/4 of NW 1/4, sec 28, T. 127 N., R. 53 W., 5th P. M. (Lease expires 10-1-17)	80	2400
190	Henry Felix	Lot 1, S. 21, T. 125 N., R. 33 W., 5th P. M. 39.25	1000	
607	Abel Greeley	NW 1/4 of NW 1/4, S. 17, T. 124 N., R. 50 W., 5th P. M. (Lease expires 10-1-17)	40	800
433	Jonas Pakanwin	W 1/2 of NW 1/4 and NW 1/4 of NW 1/4, S. 32, T. 126 N., R. 52 W., 5th P. M.	120	1800
375	Alice DeMarrias	Lot 1 and NW 1/4 of NW 1/4, S. 32, T. 120 N., R. 53 W., 5th P. M. (Lease expires 10-1-17)	56.74	2209.60
323	Daniel Hayes	SW 1/4 of NW 1/4, S. 13, T. 123 N., R. 53 W., 5th P. M.	40	800
889	Amos Goodbird	SW 1/4 of NW 1/4, S. 5, T. 121 N., R. 52 W., 5th P. M.	40	1240
315-1150	Honery Hepan	NW 1/4 of NW 1/4, S. 31, T. 124 N., R. 52 W., 5th P. M.	40	800
777	Mary Simon	SW 1/4 of NW 1/4, S. 26 and NW 1/4 of NW 1/4, S. 35, T. 121 N., R. 53 W., 5th P. M.	160	3200
481	Mary Wilson	SW 1/4 of NW 1/4, S. 25, T. 121 N., R. 51 W., 5th P. M.	80	2800
1944	Mary Gilbert	SW 1/4 of NW 1/4, S. 2, T. 121 N., R. 51 W., 5th P. M. (Lease expires 10-1-17)	158.80	4000

INHERITED INDIAN LANDS TO BE SOLD FOR CASH

Listed for sale March 20, 1916. Bids to be opened May 27, 1916.

Allotment No.	Name of Allottee	Description of Land	Acres	App'd Val.
631	Mrs. Cedus or Wamduks-kyakawin	Lot No. 1, and NW 1/4 of NW 1/4, S. 11, T. 121 N., R. 51 W., 5th P. M. (Lease expires 10-1-18)	79.77	3688.56
1146	Martha Bigire, or Makao-hoanliyawin	Lot 2, S. 3, T. 124 N., R. 52 W., and NW 1/4 of NW 1/4, S. 34, T. 125 N., R. 52 W., 5th P. M.	156.99	3240
961	Phoebe Heminger	Lot No. 1, S. 25 and NW 1/4 of NW 1/4, S. 26, T. 128 N., R. 48 W., 5th P. M. (Lease expires 10-1-18)	139	4170
810	Julia Fastbear	Lots 3 and 4 and NW 1/4 of NW 1/4, S. 2, T. 127 N., R. 52 W., 5th P. M.	102.40	7640
1	Mary LaBelle	W 1/2 of NW 1/4, S. 14, and NW 1/4 of NW 1/4, S. 15, T. 128 N., R. 54 W., 5th P. M. (Lease expires 10-1-18)	160	1800
14	Mary Akron LaBelle	NW 1/4 of NW 1/4, S. 11 and NW 1/4 of NW 1/4, S. 10, and NW 1/4 of NW 1/4, S. 12, T. 129 N., R. 53 W., 5th P. M.	119.71	4800
257	Flora Crawford	NW 1/4 of NW 1/4, S. 10, T. 127 N., R. 48 W., 5th P. M. (Lease expires 10-1-18)	160	7200
1130	Pebuhutanwin, or Mary Bartlett	Lot 2, NW 1/4 of NW 1/4, and NW 1/4 of NW 1/4, S. 1, T. 119 N., R. 52 W., 5th P. M. (Lease expires 10-1-18)	163.20	5000
481	Sutahedan or Sutahena	SW 1/4 of NW 1/4, S. 28 and NW 1/4 of NW 1/4, S. 29 and NW 1/4 of NW 1/4, S. 30, T. 123 N., R. 53 W., 5th P. M.	165.50	4900
1019	Wagehinduta	NW 1/4 of NW 1/4, S. 14, and NW 1/4 of NW 1/4, S. 15, T. 128 N., R. 54 W., 5th P. M. (Lease expires 10-1-17)	160	4800
990	Omatwin	SW 1/4 of NW 1/4, S. 27, T. 122 N., R. 52 W., 5th P. M.	160	6400
1340	John Thomani	SW 1/4 of NW 1/4, S. 26, T. 124 N., R. 51 W., 5th P. M.	40	1400
875	Michael Paul	SW 1/4 of NW 1/4, S. 34, T. 125 N., R. 52 W., 5th P. M.	160	4400

NONCOMPETENT INDIAN LANDS TO BE SOLD ON DEFERRED PAYMENT PLAN.

Listed for sale Mar. 20, 1916. Bids to be opened May 27, 1916.

Allotment No.	Name of Allottee	Description of Land	Acres	App'd Val.
1051	Pasu	NW 1/4 of NW 1/4 and NW 1/4 of NW 1/4, S. 13, T. 124 N., R. 51 W., 5th P. M. (Lease expires 10-1-18)	80	2400
583	Ideyadinajwin	SW 1/4 of NW 1/4, S. 25, T. 124 N., R. 52 W., 5th P. M.	160	2400
585	Onantamunwin	NW 1/4 of NW 1/4, S. 33 and NW 1/4 of NW 1/4, S. 21, T. 124 N., R. 53 W., 5th P. M.	80	1800
1235	Wansko or Sophie Adams	NW 1/4 of NW 1/4, S. 14 and NW 1/4 of NW 1/4, S. 26, T. 125 N., R. 52 W., 5th P. M.	80	1800
1027	Daniel Tatewanyagmani	SW 1/4 of NW 1/4, S. 35, T. 127 N., R. 52 W., 5th P. M. (Lease expires 10-1-16)	80	2600
15	Jennie Wasteyama	NW 1/4 of NW 1/4, S. 34, T. 125 N., R. 52 W., 5th P. M. (Lease expires 10-1-18)	80	1900

INHERITED INDIAN LANDS TO BE SOLD ON DEFERRED PAYMENT PLAN.

Listed for sale Mar. 20, 1916. Bids to be opened May 27, 1916.

Allotment No.	Name of Allottee	Description of Land	Acres	App'd Val.
958	William Campbell	Lot 1 and NW 1/4 of NW 1/4, S. 15, T. 118 N., R. 52 W., 5th P. M.	128.81	7728.81
815	Ellen Iyarpeya	Lots Nos. 1 and 2 and NW 1/4 of NW 1/4, S. 6, T. 124 N., R. 53 W., 5th P. M.	158.12	4800
778	Wasece Tasaka	SW 1/4 of NW 1/4, S. 8, T. 128 N., R. 54 W., 5th P. M.	40	1000

Come! Come! Come!

—To The—
Sanitary Barber Shop
Three Barbers in Attendance.

NOTICE—We have set aside Thursday evenings after eight o'clock, for Ladies Shampoo and Massage work.

your party see that you are registered.

Warrant Call.

All Bossko Township Warrants are called in for payment March 17. Interest will stop from date of call. George Oethen, Treas.

Schindler Bros. pay the highest prices for skunk, mink, muskrat and other hides. (21-47)

Notice of Hearing on Claims.

State of South Dakota, County of Roberts, SS. In County Court.
In the Matter of the Estate of Olaves N. Odden, Deceased.
NOTICE IS HEREBY GIVEN: That a hearing will be had upon all claims presented against the above Estate, at the Court Room, of the County Court, in the city of Sisseton, Roberts County, South Dakota, on the 8th day of April, 1916, at ten o'clock in the forenoon of that day, at which time and place any person interested may appear and be heard.
Dated this 24th day of March, 1916.
By the Court, H. M. Knight, Judge. (41-42)
Attest: K. Nelson, Clerk.

STATEMENT OF THE OWNERSHIP
management, etc., required by the act of Congress of August 24, 1912 of the SISSETON WEEKLY STANDARD published weekly at Sisseton, South Dakota, for April 1, 1916.
Publisher, Editor, Managing Editor, Business Manager, W. L. Johnson, Sisseton, S. D.
Known bondholders, mortgagees, and other security holders, holding 1 per cent or more of total amount of bonds, mortgages or other securities: First National Bank, Sisseton, S. D.
W. L. JOHNSON.
Sworn to and subscribed before me this 28th day of March 1916.
Notary Public, Roberts Co., S. D.
My commission expires Sept. 4, 1916.



When Praying

For your daily bread you don't need to ask for it to be made from good flour. All you have to do is just to use a little faith and try a sack of

Sisseton Best Patent Flour

But if we should receive our daily bread ready-made from "Our Father who art in Heaven" it would surely be made from this famous brand. He certainly would use the best.

For Sale at your Grocer

Sisseton Milling Co.

Vaage & Judkins.



How Are Your Collars?

Do they saw the neck after the first visit to the Laundry? If so they have been badly laundered indeed. We turn out no such unsatisfactory work. We give you back collars that look and feel as good as new, smooth in the finish and satisfactory in every respect. We call for and deliver all orders and are prompt in finishing work when so desired.

Sisseton Electric Laundry

HOME QUALITY

The Silo And Soil Fertility

The crying evil on American farms today is the constant draining of the soil of its fertilizing elements without systematic and adequate replenishment.

The vegetable matter—fertilizing matter in fact—that is carried off the farm and absolutely lost when crops are sold in the rough state—is alarmingly large. Farmers, particularly on high priced land, cannot afford to sell corn, which heavily drains the soil of its fertility. Such loss is directly traceable to and quickly reduce farm products. Note these concrete examples, which are reliable and authentic:

A bushel of oats, selling for, say 35 cents, takes 11.9 cents worth of fertilizer away from the farm, none of which ever gets back.

A bushel of wheat carries off 23 cents worth; all lost. A ton of clover hay takes \$10.55 worth of fertilizer from the land.

100 bushels of corn removes fertilizer to value of \$28.72, figured at present market prices of fertilizer elements used up.

Its the same with all crops—each takes away a definite amount of rich vegetable matter, that, some time or other, will have to be brought back in the form of fertilizer.

Now, on the other hand: By fattening a steer with silage, only \$4.02 worth of vegetable matter is taken off the farm, while \$60 comes back in price of beef sold.

1,000 lbs. of butter fat, brings in, say \$250, while in producing it only 35 cents worth of vegetable matter is lost. All the rest goes right back on the land, greatly increasing its fertility over the previous year.

When once farmers of the country realize the tremendous drain upon the fertility of their soil continually going on growing and selling forage and grain crops, they will, on this basis alone, give serious attention to the silo.

The silo—by returning directly to the soil a large majority of the fertilizing elements the silage crops absorb, practically solves the problem of maintaining and increasing soil fertility; for—through it, exhausted soils will recuperate of their own accord. We sell the Tecktonis Silo.

Lampert Lumber Co.

Julius Aasness, Mgr.

Sisseton, S. D.

PROMPT SERVICE

BUY 1914 SEED CORN



Early Minnesota No. 13 Tests 98 to 100 per ct.
Early White Cap Dent " 98 to 100 per ct.
Early Carters Yellow Dent " 98 to 100 per ct.
Early Small White Dent " 98 to 100 per ct.
Early Bloody Butcher sold out.

Order now before it is all gone. All grown in Roberts Co., S. D., from 15 to 24 years by us.

SCHINDLER BROS., Sisseton, S. D.

Write for Samples and Prices