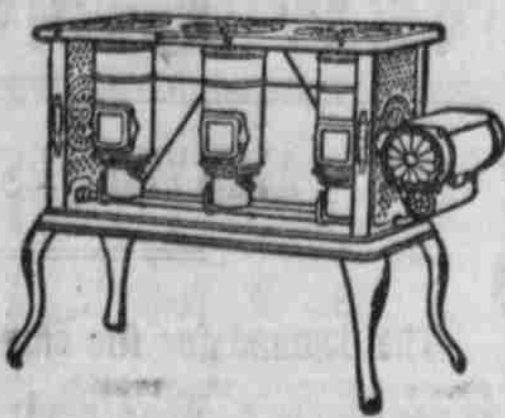


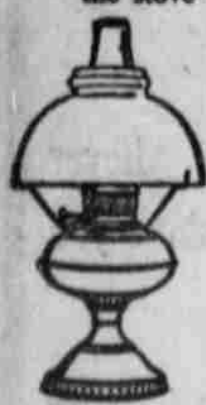
Put This Stove in Your Kitchen

It is wonderfully convenient to do kitchen work on a stove that's ready at the instant wanted, and out of the way the moment you're done. Such a stove is the New Perfection Wick Blue Flame Oil Cook-Stove. By using it you avoid the continuous overpowering heat of a coal fire and cook with comfort, even in dog-days. The



NEW PERFECTION Wick Blue Flame Oil Cook-Stove

is so constructed that it cannot add perceptibly to the heat of a room; the flame being directed up a retaining chimney to the stove top where it is needed for cooking. You can see that a stove sending out heat in but one direction would be preferable on a hot day to a stove radiating heat in all directions. The "New Perfection" keeps a kitchen uniformly comfortable. Three sizes, fully warranted. If not with your dealer, write our nearest agency.



The **Rayo Lamp** is the ideal lamp for family use—safe, convenient, economical and a great light giver. If not with your dealer, write our nearest agency.

STANDARD OIL COMPANY (Incorporated)

STATE CENTRAL COMMITTEE

Has Been Summoned to Meet at Portland April 10th to Call State Convention.

Portland, April 1.—(Special Correspondence.)—The Republican state central committee is summoned to meet in Portland, April 10, to call a state convention and to name the number of delegates that every county in the state may send to that convention.

The Republican state convention will choose four delegates-at-large for the national convention; also four candidates for presidential electors. The state central committee also will provide for conventions in the two congressional districts, each district naming two delegates, which gives Oregon, altogether, a total of eight delegates in the national convention. Eight alternates will be named to take the place of delegates who cannot be in Chicago on June 16.

Every Republican who takes part in the county primaries and convention will have a voice in naming Roosevelt's successor.

Without waiting for the call of the state central committee, several counties of Oregon already have held their conventions and elected delegations to attend the state convention. These delegates no doubt will be accepted at the state convention as the county committeemen assented to the call of these conventions.

Most of the counties favor Taft. So far no convention has instructed for either Taft or Hughes. Many delegates are known to be in favor of the re-nomination of Roosevelt or of the nomination of La Follette; and the Oregon state convention is likely to instruct accordingly.

Every Republican in Oregon should attend his county convention and should see that the right kind of men are sent to the state convention. The responsibility rests upon every voter. Not much time remains to act and to organize.

1-4 of Pound a Week. At least, is what a young baby ought to gain in weight. Does yours? If not there's something wrong with its digestion. Give it McGee's Baby Elixir and it will begin gaining at once. Cures stomach and bowel troubles, aids digestion, stops fretfulness, good for teething babies. Price 25c and 50c. Sold by all dealers.

Twelve hobos and one woman rosted in the city jail last night. The supreme court today affirmed Payne vs. Savage, a Marion county appeal case.

A Healing Salve for Burns, Chapped Hands and Sore Nipples. As a healing salve for burns, sores, sore nipples and chapped hands Chamberlain's Salve is most excellent. It cures the skin of a burn almost instantly, and on the injury is very severe, heals the parts without leaving a scar. Price 25 cents. For sale by Dr. Stone's.

Representative McCall, of Mass., introduced in the house a campaign expense publicity bill.

President Roosevelt Says. That outdoor exercise is needed by the American people. That all rheumatism follow that advice? The answer is simple—use Ballard's Snow Liniment, and the rheumatism will go, leaving you as spry as a colt. Gives quick and permanent relief from rheumatism, neuralgia, lame back and all pains. Sold by all dealers.

CASTORIA.

OREGON SUPREME COURT TUESDAY

The prominent subornation of perjury case against T. J. Luper, who was accused of testifying falsely in his divorce suit against his wife, in the circuit court of this county, is being argued before the supreme court today.

The following decisions were rendered by the supreme court: Steen vs. Weisten, Multnomah county, affirmed; Payne vs. Savage, Marion county, affirmed; State vs. Hayes, Harney county, affirmed; Perlera vs. State Land Co., Multnomah county, affirmed; State vs. Beatrice Lewis, Multnomah, affirmed; Richardson vs. City of Salem, petition for rehearing denied; Jennings vs. Lents, Baker county, petition for rehearing denied.

PRESBYTERIAN CHURCH MEETING TONIGHT

Rev. Dr. Foulks, pastor of the First Presbyterian church of Portland, and Wm. M. Ladd will arrive in this city from Portland late this afternoon and tonight will address a big gathering at the Presbyterian church of this city. The meeting will be for the furtherance of the work of the church and the two Portland men will be the principal speakers, having been especially invited to furnish their views to the local Presbyterian churchgoers.

BROOKS COWMEN TALK EVAPORATOR

A largely attended meeting of dairymen took place at Brooks on Monday night for the purpose of boosting and securing funds for the mammoth milk condenser to be installed there. The following committee was appointed to secure the support of financial men in the enterprise: Egan, Broderick and Jones.

Catarh Cannot Be Cured.

with local applications, as they cannot reach the seat of the disease. Catarh is a blood or constitutional disease, and in order to cure it you must take internal remedies. Hall's Catarh Cure is taken internally, and acts directly on the blood and mucous surfaces. Hall's Catarh Cure is not a quack medicine. It was prescribed by one of the best physicians in this country for years and is a regular prescription. It is composed of the best tonics known, combined with the best blood purifiers, acting directly on the mucous surfaces. The perfect combination of the two ingredients is what produces such wonderful results in curing Catarh. Send for testimonials free.

F. J. CHENEY & CO., Props., Toledo, O. Sold by Druggists, price 75c. Take Hall's Family Pills for constipation.

SALEM PRESS CLUB ELECTS ITS OFFICERS

The local Press club held its annual meeting last night and, in addition to taking in several new members and arranging for a banquet to be held April 15 in this city, elected the following officers for the year: President, R. E. Hofer, vice-president, R. J. Hendricks; secretary and treasurer, W. J. Babcock.

Death Was On His Heels.

Jose P. Morris, of Skippers, Va., had a close call in the spring of 1906. He says: "An attack of pneumonia left me so weak and with such a fearful cough that my friends declared consumption had me, and death was on my heels. Then I was persuaded to try Dr. King's New Discovery. It helped me immediately, and after taking two and a half bottles I was a well man again. I found out that New Discovery is the best remedy for coughs and lung disease in all the world." Sold under guarantee at J. C. Perry's drug store, 50c and \$1.00. Trial bottle free.

READY TAILORED CLOTHES FOR WELL DRESSED MEN.

The Racso System

PRICE RANGE \$20 TO \$40

BREEDERS' HORSE SHOW

Saturday, April 4th, Salem, Oregon

FARMERS' PRACTICAL EXHIBITION

Cash prizes, merchants' special prizes, stallion breeders' prizes, valuable cups etc.

FOR ALL BREEDS OF HORSES, (pure-bred and grades), stallions, mares, colts, ponies and jacks; two, three and four-horse teams, roadsters, saddlers.

If you own good horses show them at Salem, April 4. If you wish to sell here's your market.

For premium list and information, address

L. K. PAGE,

F. A. WELCH,

Southern Pacific

R. R. Time Card

Time Card No. 52 Effective Sunday December 29th, 12.01 A. M.

Toward Portland Passenger.

No. 16.—5:53 A. M. Oregon Express

No. 18.—8:40 A. M. Cottage Grove Passenger.

No. 12.—2:45 P. M. Roseburg Passenger.

No. 14.—9:13 P. M. Portland Express.

Toward Portland Freight.

No. 222.—5:00 P. M. Portland Fast Freight.

No. 226.—10:40 a. m., way freight arrives.

No. 226.—11:28 a. m., way freight departs.

Toward San Francisco Passenger.

No. 11.—11:03 A. M. Roseburg Passenger.

No. 17.—6:45 P. M. Cottage Grove Passenger.

No. 15.—9:56 P. M. California Express.

No. 13.—2:01 A. M. San Francisco Express.

Toward San Francisco Freight.

No. 221.—2:43 A. M. Portland Fast Freight.

No. 225.—11:28 A. M. Way-Freight

TIME TABLE

CORVALLIS & EASTERN R. R.

Trains from and to Yaquina.

No. 1—

Arrives at Corvallis 11:00 a. m.

Arrives at Albany 5:55 p. m.

Leaves Yaquina 6:45 a. m.

Arrives at Albany 11:58 a. m.

No. 2—

Leave Albany 12:35 p. m.

Arrives at Yaquina 6:15 p. m.

Trains to and from Detroit.

Leaves Corvallis 1:40 p. m.

No. 3—

Leaves Albany 7:30 a. m.

A. M.—6:00, 7:05, 8:05, 10:05.

No. 4—

Leaves Detroit 1:00 p. m.

follows, commencing Jan. 16, 1908.

Trains for Corvallis.

No. 8—

Leaves Albany 7:55 a. m.

Arrives at Corvallis 8:35 a. m.

No. 10—

Leaves Albany 3:55 p. m.

Arrives at Corvallis 4:35 p. m.

No. 6—

Leaves Albany 7:45 p. m.

Arrives at Corvallis 8:25 p. m.

Trains for Albany.

No. 5—

Leaves Corvallis 6:30 a. m.

Arrives at Albany 7:10 a. m.

No. 9—

Leaves Corvallis 2:15 p. m.

Arrives at Albany 2:55 p. m.

No. 7—

Leaves Corvallis 6:00 p. m.

Arrives at Albany 6:40 p. m.

No. 11 (Sunday only)—

Leaves Corvallis 11:15 a. m.

Arrives at Albany 11:58 a. m.

No. 12 (Sunday only)—

Leaves Albany 12:35 p. m.

Arrives at Corvallis 1:18 p. m.

For further information apply to

WM. McMURRAY,

Gen. Pass. Agt., Portland, Oregon.

Jno. M. Scott, Asst. G. P. A.

Oregon Electric Railway Company

TIME CARD

Leaving Salem.

Portland and intermediate stations,

local 6:45 a. m.

Portland and intermediate stations,

local 8:05 a. m.

West Woodburn, Wilsonville, Tualatin, Portland, limited 9:30 a. m.

Portland and intermediate stations,

local 11:03 a. m.

Portland and intermediate stations,

local 2:30 p. m.

West Woodburn, Wilsonville, Tualatin, Portland, limited 4:02 p. m.

Portland and intermediate stations,

local 5:35 p. m.

Arriving Salem.

Portland and intermediate stations,

local 8:35 a. m.

Portland and intermediate stations,

local 10:45 a. m.

Portland, Tualatin, Wilsonville, West Woodburn, limited 11:15 a. m.

Portland and intermediate stations,

local 1:25 p. m.

Portland and intermediate stations,

local 4:50 p. m.

Portland, Tualatin, Wilsonville, West Woodburn, limited 5:47 p. m.

Portland and intermediate stations,

local 7:50 p. m.

Steamers Pomona and Orwena leave for Portland Monday, Wednesday and Friday at 10 a. m. and Tuesday, Thursday and Saturday at 8 a. m. For Corvallis, Tuesday, Thursday and Saturday about 6 p. m. M. P. Baldwin, Agent. Office and dock at foot of Trade street.

M. P. BALDWIN, Agent.

THE AVENUE

Creams, ices, cigars and confections. Corner of Seventeenth and

OREGON'S OPPORTUNITY

COLONIST RATES from all parts of the United States and Canada to all parts of Oregon and the Northwest will be put into effect by

THE OREGON RAILROAD & NAVIGATION CO.

—and—

SOUTHERN PACIFIC COMPANY

(Lines in Oregon)

DAILY DURING MARCH AND APRIL, 1908.

From the Principal Cities of the Middle West the Rates will be as follows:

FROM	TO SALEM	FROM	TO SALEM
CHICAGO	\$38	COUNCIL BLUFFS	\$30
ST. LOUIS	\$35	OMAHA	\$30
KANSAS CITY	\$30	ST. PAUL	\$30

Corresponding Rates from all other Eastern points. Stopovers at pleasure at all points in Oregon.

The Colonist Rate is the greatest of all homebuilders. Oregon has unlimited resources and needs more people who desire homes and larger opportunities.

Oregon people can accomplish splendid results by heralding this opportunity to all the world. Send Oregon literature giving good reliable information about the state, far and wide. Call on the above railroads for it if necessary.

FARES CAN BE PREPAID

Here at home if desired. Any agent is authorized to accept the required deposit and telegraph ticket to any point. Call on local agent or address.

WM. McMURRAY,

General Passenger Agent, Portland, Oregon.

Don't read this unless you are in need of some of these articles, and wish to save money by buying them at a bargain. Until March 30, in order to make room for new goods, these items will be offered at greatly reduced prices.

These are all of standard make and good quality.

	Regular Price	Sale Price
One new 3-inch wagon, complete	\$110.00	\$95.00
One new buggy, best make	130.00	100.00
One new buggy, best make	95.00	80.00
One new runabout	55.00	42.50
One new disc harrow	22.00	17.50
One new Tiger drill	90.00	72.50
One new Buckeye binder	160.00	135.00
One new Buckeye mower	60.00	48.50
One new Buckeye rake	32.00	29.00
One new Davis cream separator	100.00	65.00
One new 12-inch Rock Island Clipper steel plow	19.50	15.00
One new 12-inch Rock Island Clipper steel plow	17.50	12.50
One new 10-inch Rock Island Clipper steel plow	13.50	11.50
One new handmade light express	75.00	60.00
One new handmade light express	75.00	60.00

Also second-hand cultivator, mower and rake at a bargain. Single-trees, double-trees, neck-yokes, dashboards, cushions, at a 30 per cent reduction.

An assortment of about \$300 worth of paints, lead, oil, varnishes and stains will be put on sale.

I will also sell on commission any implement or vehicle which you may wish to dispose of, at any time.

GEORGE B. JACOBS

Corner Pine and Front St.

SALEM, OREGON

YOU'LL ENJOY A DRIVE

In one of our rigs just as much as you owned it. More, in fact, you will have all the pleasure of only a mere fraction of the expense of a private stable. You are limited in your choice of a turn-out either. Our livery service can supply anything you require, from runabout to a coach and team. Can we serve you?

FASHION STABLES.

C. W. Yanke, Prop.

131-137 N. High St. Phone Mail

Allen's

BOSTON BROWN BREAD FLOUR

Is Self-rising. It makes Genuine Brown Bread, Toothsome Quick Biscuit, and a

GLORIOUS BOILED PUDDING

Sold by All Grocers

HAVE AN EARNEST CARE

For the comfort of the folks at home. Bundle up the family washing and phon. No. 25 early Monday for to send a wagon for the clothes. We will save you money, worry and discomfort, and save the clothes, as well. They will come back to you fresh, crisp and clean.

WE DO IT RIGHT

The Salem Steam Laundry

THE LAUNDRY THAT KNOWS HOW

LIME AND SULPHUR SPRAY

DEPENDABLE BRAND

Manufactured by Gideon Stolz Company, Cor. Mill and Summer St.

SALEM, OREGON

We guarantee this spray to be a strictly pure lime and sulphur solution, test 29 to 31 Baume.

For sale by FLETCHER & BRYD, D. A. WHITE & SONS, SON & CO., R. D. GILBERT & CO. and AT FACTORY.

Price \$5.50 per barrel; \$1.50 credit for barrel, if returned.